

Mountain Rescue England & Wales

Patron – HRH The Duke of Cambridge



Mountain Rescue (England and Wales)

Incident Report 2016

Release 1 – May 2017

©2017 MR(E&W)

ISSN: 2046-6307 (Print)
ISSN: 2046-6315 (Online)



Contents

Incident Report 2016	1
Monthly Overview	2
Mountain Incidents	3
Mountain Subjects	5
Mountain Incident Causes	6
Non-Mountain Incidents	7
Non-Mountain Subjects	9
Main Injury Sites	10

All enquiries please direct to: -

Rob Shepherd
Statistics Officer MR(E&W)
Ty Uchaf, Tanysgafell
Bethesda
Gwynedd
LL57 4AJ
Tel: +44 (0)7596 154 845
Email: statisticsofficer@mountain.rescue.org.uk

Further copies of this report can be obtained from the Mountain Rescue (England and Wales) website –

<http://www.mountain.rescue.org.uk/media-centre/statistics>

Reference Information:

ISSN 2046-6307 (Print)
ISSN 2046-6315 (Online)

Summary

2074 callouts from 32 statutory agencies of which 1812 resulted in a Mountain Rescue deployment
1785 persons assisted
Total volunteer hours: 81,778 (Operational hours, not including training or administration) <p style="text-align: right;">Rescuer hours utilised as follows: Rescuing: 50,138 hrs Civil Incidents: 9,680 hrs Searching: 21,960 hrs</p>
There were only 14 days in 2016 without a mountain rescue callout in England and Wales.

2016 has shown an increase upon 2015 in the number of recorded incidents from MREW teams.

Most of MREW's regions saw a rise of at least 10% in reported incident numbers except by contrast the Lake District which has seen a decrease of over 20%. The most striking observation was the reduction in incidents reported towards the end of the year; much lower relative to the 5-year average for this period. Analysis continues to try and uncover the reasons for the decline.

Having said that anything which contributes to the reduction in mountain rescue incidents would be welcomed by mountain rescue volunteers and outdoor enthusiasts alike. In this respect, it is worth highlighting that nearly 500 incidents in 2016 were of the type that lend themselves to being more easily avoided than the more serious medical issues or accidents. Reasons such as getting lost, benighted or crag-fast, succumbing to minor slips and trips, or for some reason "*unable to continue*" all contribute to this figure.

It is not appropriate to demand or even expect these types of incidents to disappear entirely; and nobody wants to see the wholesale discouragement of outdoor adventures. Nevertheless, it is this category of incidents where it is practical to suggest that improvements can be made in helping outdoor participants to avoid needing our assistance.

In a similar vein, the rise in occurrence of Mountain Biking incidents continues, albeit only very slightly and thankfully not at the same rate as seen over previous periods. Furthermore, a cursory glance at the types of serious injuries that are frequently sustained when mountain biking incidents occur continues to highlight the need for more awareness concerning the risks that this increasing popular pursuit carries.

There were thankfully no protracted major incidents in 2016 that gave rise to the kind of time expenditure as seen in the floods the year before. Having said that over eighty thousand hours were given in service by mountain rescue volunteers throughout the year.

80'000 hours is roughly equivalent to a company of 40 people all working full time for the whole year.

Moreover, this *recorded* effort doesn't consider the attendance of regular training sessions, plus the administration and organisation that ensure the teams, their equipment and vehicles are always ready for the call.

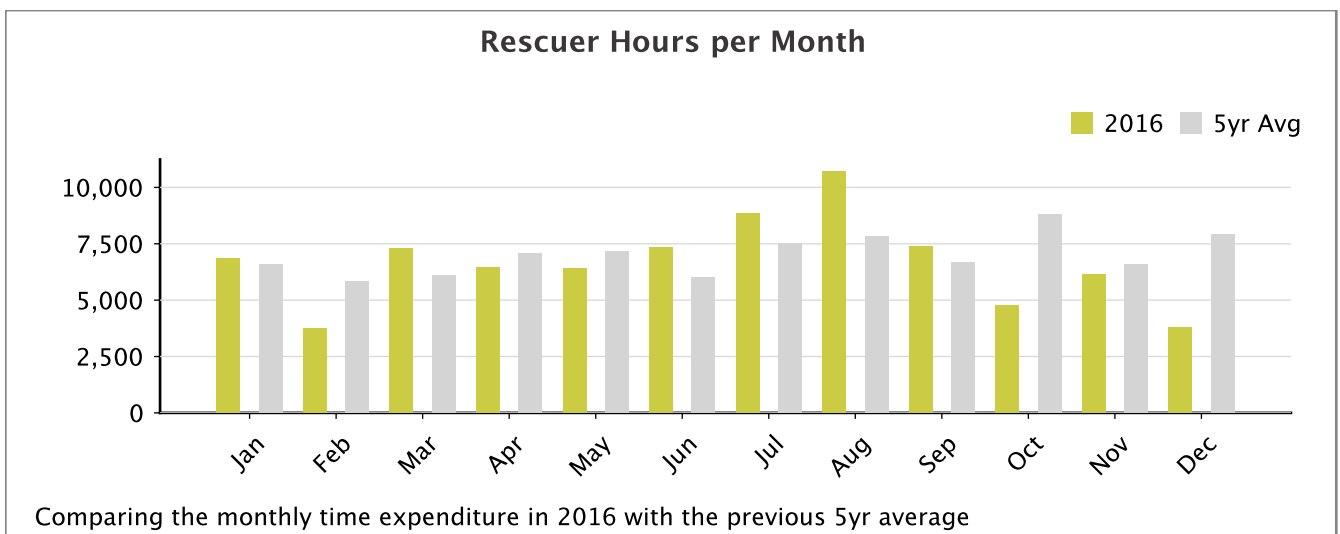
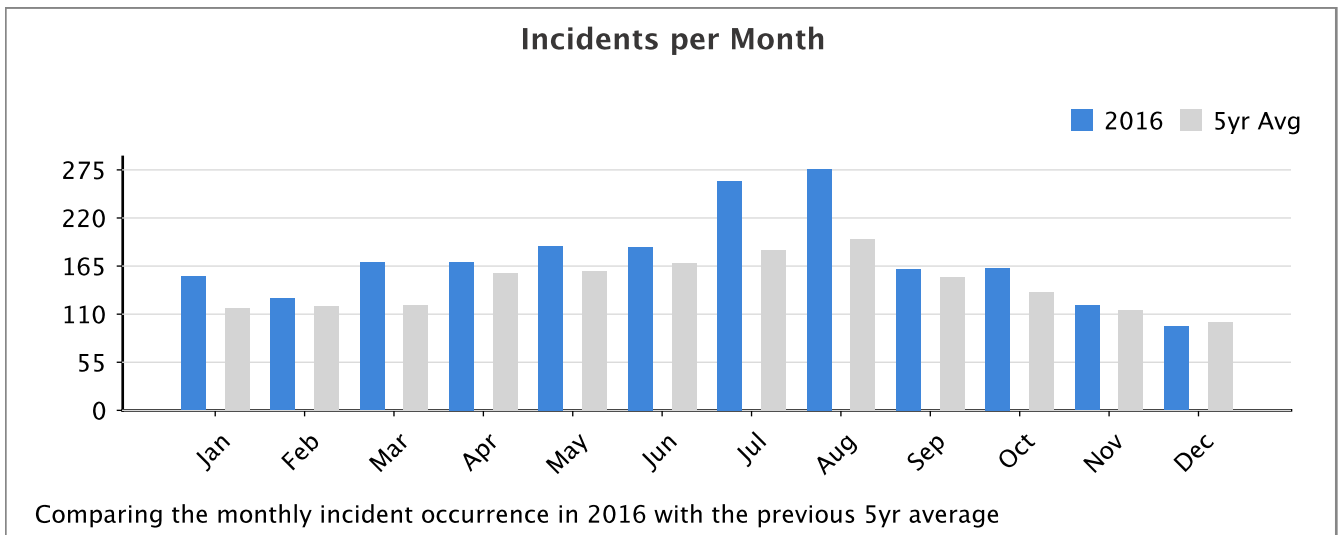
Rob Shepherd
Statistics Officer MR(E&W)
01/05/2017

Monthly Overview

The following charts show the activities of the Mountain Rescue teams in England and Wales for each month of the year. The quantity of calls for assistance (both attended deployments and investigation only) and the cumulative hours spent by Mountain Rescue Volunteers in response to these calls are shown.

The efforts for 2016 are shown alongside the averages from the 5 years previous.

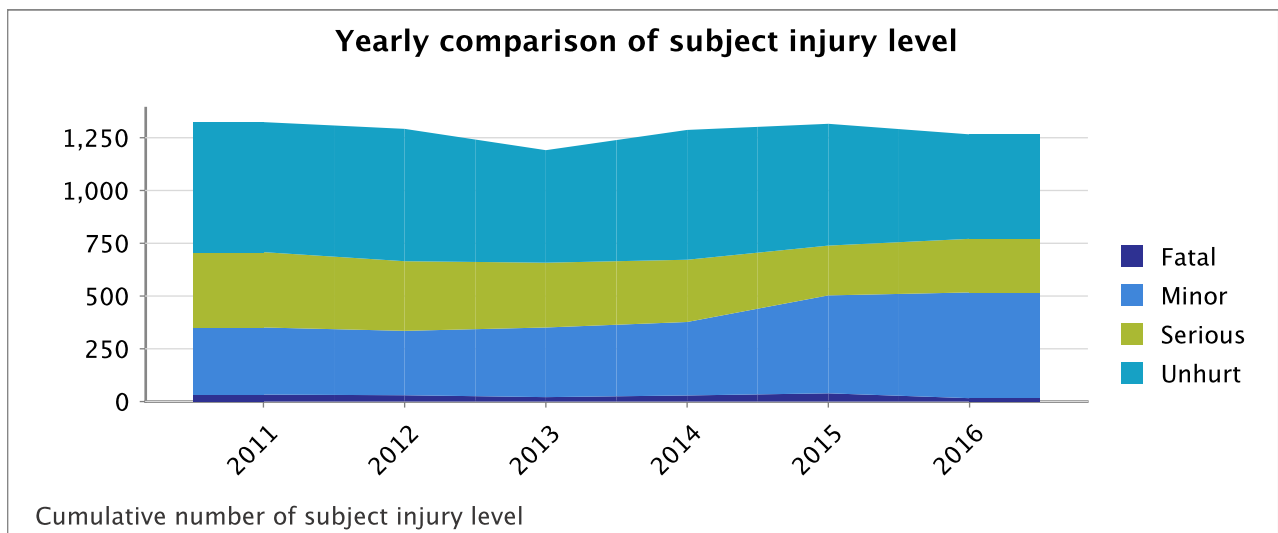
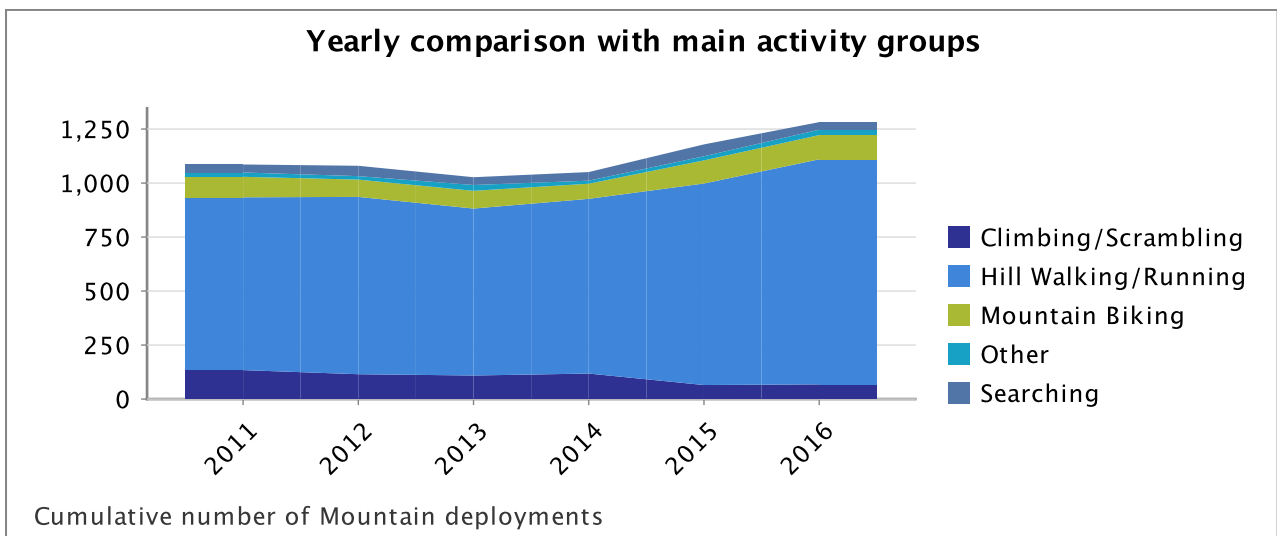
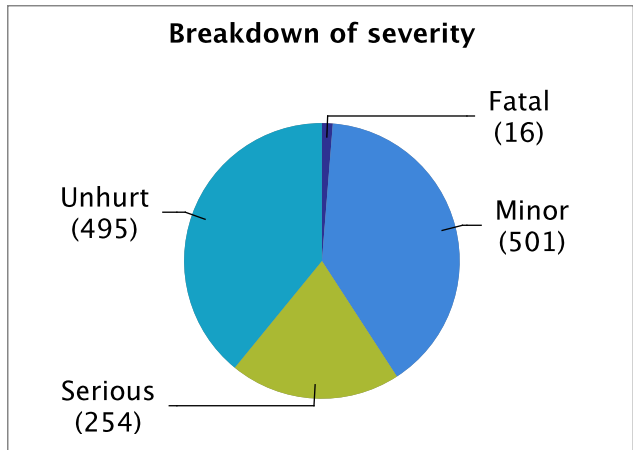
The most significant observation is how much busier the summer holiday months were in 2016, when compared to the average from the 5 years previous.



Mountain Incidents

This section covers those activities that are mountain or wilderness-related to which Mountain Rescue teams were deployed.

Alerts	1439
Deployments	1282
Investigation/Standby	157
Total Hours	46571
Persons Assisted	1320
Fatal	16
Injured	759
Uninjured	545



Mountain Incidents

Occurrences and Subjects Assisted in Mountain Incidents

		Lake District	Mid Pennine	N Wales	NE England	Peak District	Peninsula	S Wales	SW England	Yorkshire Dales	Totals	
Abseiling	Incidents	0	0	2	1	0	0	0	0	0	3	1%
	Subjects	0	0	2	1	0	0	0	0	0	3	1%
Cave/Mine Exploration	Incidents	0	0	2	0	1	0	0	0	0	3	1%
	Subjects	0	0	3	0	1	0	0	0	0	4	1%
Fell Running	Incidents	8	7	0	1	4	2	0	0	6	28	3%
	Subjects	9	6	0	0	4	0	0	0	5	24	2%
Hang-gliding	Incidents	2	0	0	1	3	1	2	0	1	10	1%
	Subjects	3	0	0	1	2	0	0	0	0	6	1%
Hill Walking	Incidents	282	65	244	59	150	35	44	1	69	949	75%
	Subjects	283	61	327	22	144	14	39	1	63	954	75%
Hill Walking (D of E)	Incidents	8	2	4	0	4	3	2	0	1	24	2%
	Subjects	13	2	13	0	7	2	1	0	1	39	4%
Hill Walking (Winter)	Incidents	29	0	8	0	1	0	0	0	2	40	4%
	Subjects	40	0	18	0	1	0	0	0	3	62	5%
Mountain Biking	Incidents	15	23	11	13	18	1	5	0	26	112	9%
	Subjects	13	24	11	3	16	0	4	0	19	90	8%
Orienteering	Incidents	1	0	0	0	0	0	0	0	0	1	1%
	Subjects	1	0	0	0	0	0	0	0	0	1	1%
Parapenting	Incidents	3	1	1	0	1	0	0	0	0	6	1%
	Subjects	2	1	0	0	0	0	0	0	0	3	1%
Rescue Team Activity	Incidents	0	0	0	0	1	0	0	0	0	1	1%
	Subjects	0	0	0	0	1	0	0	0	0	1	1%
River Crossing	Incidents	0	0	3	0	1	0	0	0	0	4	1%
	Subjects	0	0	3	0	1	0	0	0	0	4	1%
Rock Climbing - roped	Incidents	4	1	14	4	4	1	0	1	5	34	3%
	Subjects	2	1	18	3	4	1	0	1	4	34	3%
Rock Climbing - unroped	Incidents	1	3	0	2	4	0	0	0	1	11	1%
	Subjects	0	2	0	2	3	0	0	0	0	7	1%
Rock Scrambling	Incidents	2	0	8	1	0	0	0	0	7	18	2%
	Subjects	2	0	10	1	0	0	0	0	6	19	2%
Search - Mountain	Incidents	6	1	6	3	7	4	2	0	6	35	3%
	Subjects	2	2	1	1	6	0	2	0	6	20	2%
Snow/Ice Climbing - roped	Incidents	0	0	1	0	0	0	0	0	0	1	1%
	Subjects	0	0	2	0	0	0	0	0	0	2	1%
Snow/Ice Climbing - unroped	Incidents	1	0	0	0	0	0	0	0	0	1	1%
	Subjects	1	0	0	0	0	0	0	0	0	1	1%
Snowboarding	Incidents	1	0	0	0	0	0	0	0	0	1	1%
	Subjects	1	0	0	0	0	0	0	0	0	1	1%
Totals	Incidents	363	103	304	85	199	47	55	2	124	1282	
	Subjects	372	99	408	34	190	17	46	2	107	1275	

Mountain Subjects

Subjects Assisted by severity in Mountain Incidents

		Lake District	Mid Pennine	N Wales	NE England	Peak District	Peninsula	S Wales	SW England	Yorkshire Dales
Abseiling	Injured	0	0	2	1	0	0	0	0	0
	Unhurt	0	0	0	0	0	0	0	0	0
Cave/Mine Exploration	Injured	0	0	1	0	0	0	0	0	0
	Unhurt	0	0	2	0	1	0	0	0	0
Fell Running	Fatal	0	1	0	0	0	0	0	0	0
	Injured	7	5	0	0	3	0	0	0	5
	Unhurt	2	0	0	0	1	0	0	0	0
Hang-gliding	Injured	1	0	0	1	2	0	0	0	0
	Unhurt	2	0	0	0	0	0	0	0	0
Hill Walking	Fatal	5	1	4	0	1	0	0	0	0
	Injured	185	56	128	14	102	8	22	1	50
	Unhurt	93	4	195	8	41	6	17	0	13
Hill Walking (D of E)	Injured	4	2	1	0	1	1	1	0	1
	Unhurt	9	0	12	0	6	1	0	0	0
Hill Walking (Winter)	Fatal	0	0	1	0	0	0	0	0	0
	Injured	12	0	0	0	1	0	0	0	1
	Unhurt	28	0	17	0	0	0	0	0	2
Mountain Biking	Injured	13	24	8	3	13	0	4	0	18
	Unhurt	0	0	3	0	3	0	0	0	1
Orienteering	Injured	1	0	0	0	0	0	0	0	0
Parapenting	Injured	2	1	0	0	0	0	0	0	0
Rescue Team Activity	Fatal	0	0	0	0	1	0	0	0	0
River Crossing	Fatal	0	0	1	0	0	0	0	0	0
	Injured	0	0	2	0	1	0	0	0	0
Rock Climbing - roped	Fatal	0	0	0	0	0	0	0	1	0
	Injured	2	1	10	2	4	1	0	0	4
	Unhurt	0	0	8	1	0	0	0	0	0
Rock Climbing - unroped	Injured	0	2	0	2	3	0	0	0	0
Rock Scrambling	Injured	2	0	4	0	0	0	0	0	6
	Unhurt	0	0	6	1	0	0	0	0	0
Search - Mountain	Injured	0	0	0	0	0	0	2	0	0
	Unhurt	2	2	1	1	6	0	0	0	6
Snow/Ice Climbing - roped	Unhurt	0	0	2	0	0	0	0	0	0
Snow/Ice Climbing - unroped	Unhurt	1	0	0	0	0	0	0	0	0
Snowboarding	Injured	1	0	0	0	0	0	0	0	0

Mountain Incident Causes

Causes of Mountain Incidents

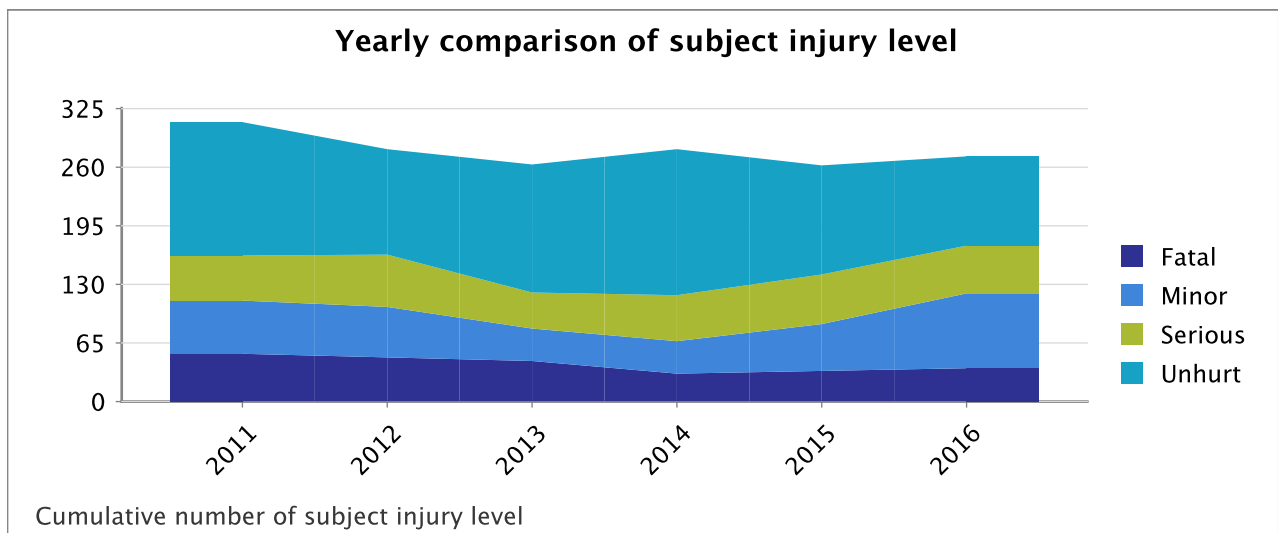
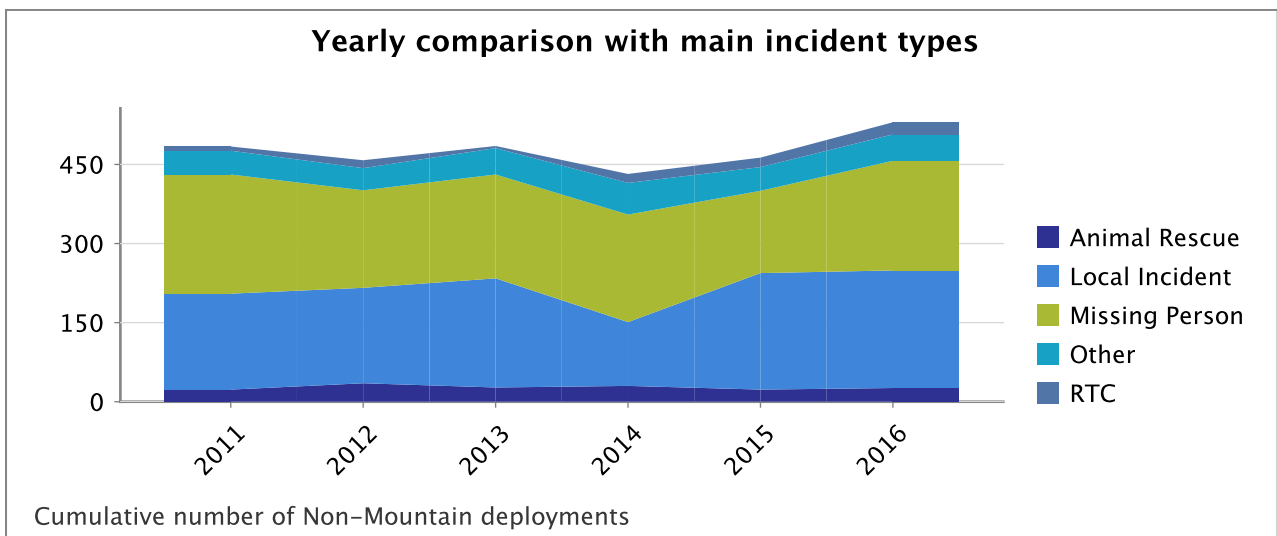
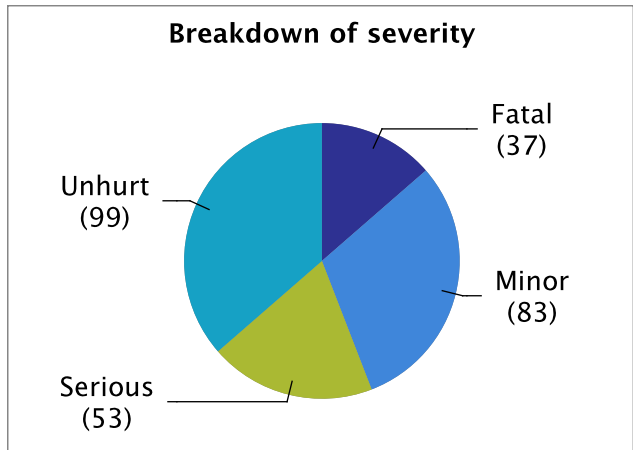
This report summarises some of the main causes of Mountain Accidents. It is based on a search of key words used in incident reports and is not definitive. All causes have not been listed, so the column totals may not agree with the total number of incidents. A typical report may mention multiple causes.

	Climbing/Scrambling	Hill Walking	Other	Total
Avalanche	1	0	0	1
Belay / Runner Failure	1	4	0	5
Benighted	1	18	1	20
Cragfast	3	28	0	31
Fall or Tumble	35	164	34	233
Lost or Overdue	0	124	7	131
Medical Collapse or Illness	0	72	1	73
Overdue or Missing	1	33	17	51
Rockfall	0	2	0	2
Shouts, Lights or Flares	0	8	7	15
Slip, Trip or Stumble	5	215	5	225
Unable to Continue	0	30	0	30

Non-Mountain Incidents

This section covers those activities that are lowland, urban or roadside to which Mountain Rescue teams were deployed.

Alerts	635
Deployments	530
Investigation/Standby	105
Total Hours	33131
Persons Assisted	328
Fatal	38
Injured	139
Uninjured	151



Non-Mountain Incidents

Occurrences and Subjects Assisted in Non-Mountain Incidents

		Lake District	Mid Pennine	N Wales	NE England	Peak District	Peninsula	S Wales	SW England	Yorkshire Dales	Totals	
Aircraft - Military	Incidents	0	0	1	0	0	0	0	0	0	1	1%
	Subjects	0	0	6	0	0	0	0	0	0	6	2%
Animal Rescue	Incidents	7	0	4	4	2	1	0	0	8	26	5%
	Subjects	0	0	1	0	0	0	0	0	0	1	1%
Fishing	Incidents	0	0	0	1	0	0	1	0	0	2	1%
	Subjects	0	0	0	1	0	0	2	0	0	3	1%
Gliding	Incidents	2	0	0	0	2	0	0	0	0	4	1%
	Subjects	2	0	0	0	2	0	0	0	0	4	2%
Local Incident	Incidents	36	43	15	24	45	29	7	1	19	219	42%
	Subjects	16	36	10	3	19	12	6	3	12	117	39%
Major Incident	Incidents	0	0	0	0	2	1	0	0	1	4	1%
	Subjects	0	0	0	0	0	0	0	0	0	0	0%
Motor Sport	Incidents	1	1	0	2	3	0	1	0	2	10	2%
	Subjects	0	1	0	0	2	0	0	0	1	4	2%
Occupational	Incidents	3	1	1	0	0	0	0	0	1	6	2%
	Subjects	2	1	1	0	0	0	0	0	0	4	2%
Pony Trekking	Incidents	0	3	1	0	1	0	2	0	1	8	2%
	Subjects	0	3	1	0	0	0	3	0	0	7	3%
Road Traffic Collision	Incidents	7	5	6	2	0	0	0	0	3	23	5%
	Subjects	3	4	6	0	0	0	0	0	1	14	5%
Search - Non-mountain	Incidents	12	43	15	16	31	37	3	33	18	208	40%
	Subjects	9	28	12	8	27	2	3	25	12	126	42%
Sledging	Incidents	0	3	0	0	0	0	0	0	0	3	1%
	Subjects	0	3	0	0	0	0	0	0	0	3	1%
Water Sport (all types)	Incidents	9	1	4	0	0	0	2	0	0	16	4%
	Subjects	8	1	4	0	0	0	1	0	0	14	5%
Totals	Incidents	77	100	47	49	86	68	16	34	53	530	
	Subjects	40	77	41	12	50	14	15	28	26	303	

Non-Mountain Subjects

Subjects Assisted by severity in Non-Mountain Incidents

		Lake District	Mid Pennine	N Wales	NE England	Peak District	Peninsula	S Wales	SW England	Yorkshire Dales
Aircraft - Military	Unhurt	0	0	6	0	0	0	0	0	0
	Fatal	0	0	0	1	0	0	2	0	0
Animal Rescue	Unhurt	0	0	1	0	0	0	0	0	0
Fishing	Fatal	0	0	0	1	0	0	2	0	0
Gliding	Injured	2	0	0	0	2	0	0	0	0
Local Incident	Fatal	1	2	1	1	1	3	0	0	3
	Injured	12	31	7	1	14	2	0	0	6
Motor Sport	Unhurt	3	3	2	1	4	7	6	3	3
	Injured	0	1	0	0	2	0	0	0	1
Occupational	Injured	1	1	1	0	0	0	0	0	0
	Unhurt	1	0	0	0	0	0	0	0	0
Pony Trekking	Injured	0	3	1	0	0	0	3	0	0
Road Traffic Collision	Fatal	0	0	1	0	0	0	0	0	0
	Injured	3	4	4	0	0	0	0	0	1
	Unhurt	0	0	1	0	0	0	0	0	0
Search - Non-mountain	Fatal	2	4	1	1	4	0	0	5	3
	Injured	1	7	0	1	5	0	2	6	1
	Unhurt	6	17	11	6	18	2	1	14	8
Sledging	Injured	0	3	0	0	0	0	0	0	0
Water Sport (all types)	Fatal	0	0	1	0	0	0	0	0	0
	Injured	3	1	2	0	0	0	1	0	0
	Unhurt	5	0	1	0	0	0	0	0	0

Injury Sites

Subject Injury Sites

This report summarises the main sites and types of injuries dealt with by MR Teams. It is based on a search of keywords used in incident reports and so is not definitive but indicative of the distribution of injuries amongst persons assisted by MR Teams

	Climbing / Scrambling	Hill Walking	Other (Mountain)	Other (Non-Mountain)	Total
Abdomen	0	2	1	0	3
Arm & Hand	5	29	7	1	42
Back & Neck	2	21	9	9	41
Chest & Shoulder	4	45	10	9	68
Exhaustion	0	6	0	1	7
Fractures	10	136	13	11	170
Head	6	22	5	3	36
Heart Attack (fatal)	0	3	0	0	3
Heart Attack (non-fatal)	0	12	0	3	15
Hypothermia	0	6	0	8	14
Lacerations etc.	2	11	7	2	22
Lower Leg & Foot	9	151	6	9	175
Pelvis	4	12	5	5	26
Upper Leg & Knee	1	50	5	5	61